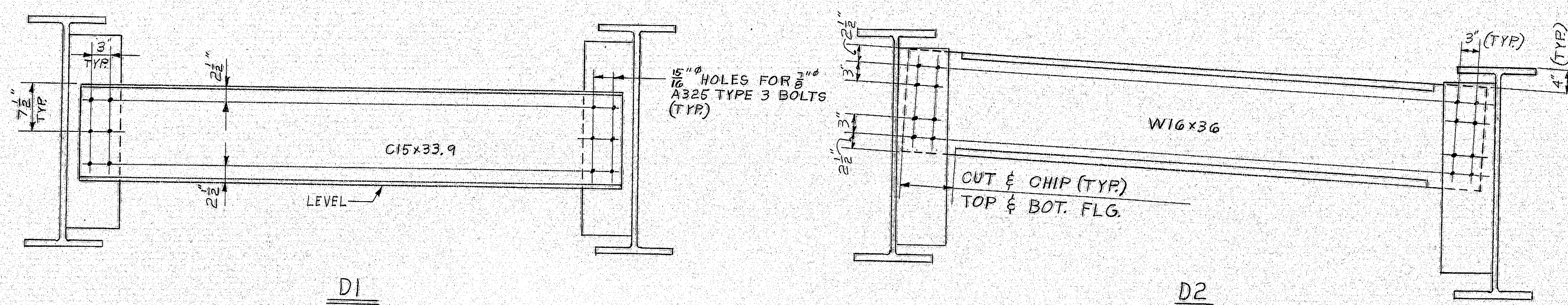


FRAMING PLAN
SOUTHBOUND

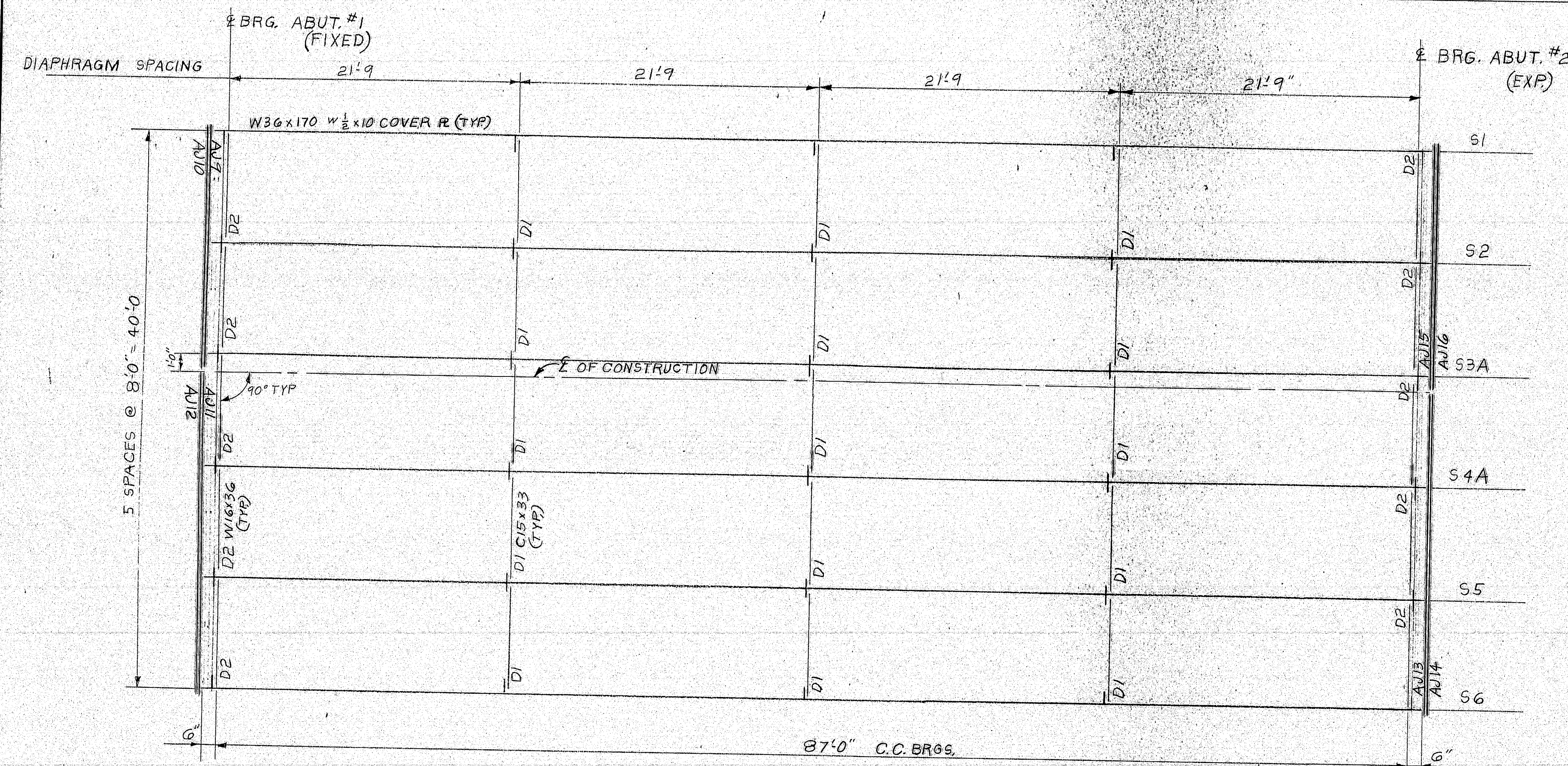
FORM BRACKETING
Steel beams are to be placed with 7/8" x 1/2" x 1/2" steel plates at all connections. High strength bolts. Steel of minimum yield strength.



ITEM NO. 504.70
PROJ. NO. 1-95-5(42) 81

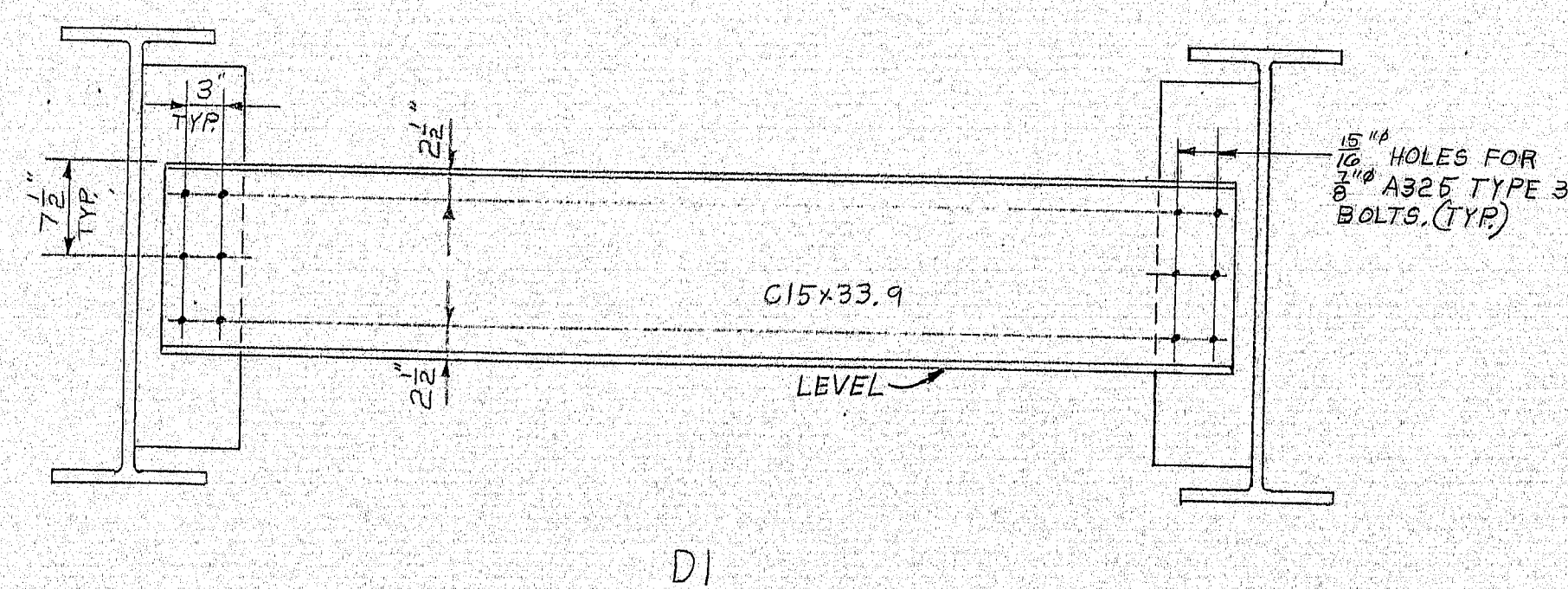
FRAMING PLAN @ SB.			
PRINT DIST.			
2P	7-14-75	A	
2S	7-29-75	FA	
4P	7-29-75	FA	
2P	9-5-75	FA	
JOB: I-95 SB NB OVER RT 138			
BOWDOINHAM, MAINE			
CUSTOMER: REED & REED WOOLWICH, ME.			
DESIGNER: STATE OF MAINE D. O. T.			
REV.	ORDER NO.	JOB NO.	DRAWING NO.
CHECKED 7-10-75 R.F.S.			
DRAWN 6-6-75 D.A.B.		575-34	E-1

154-110

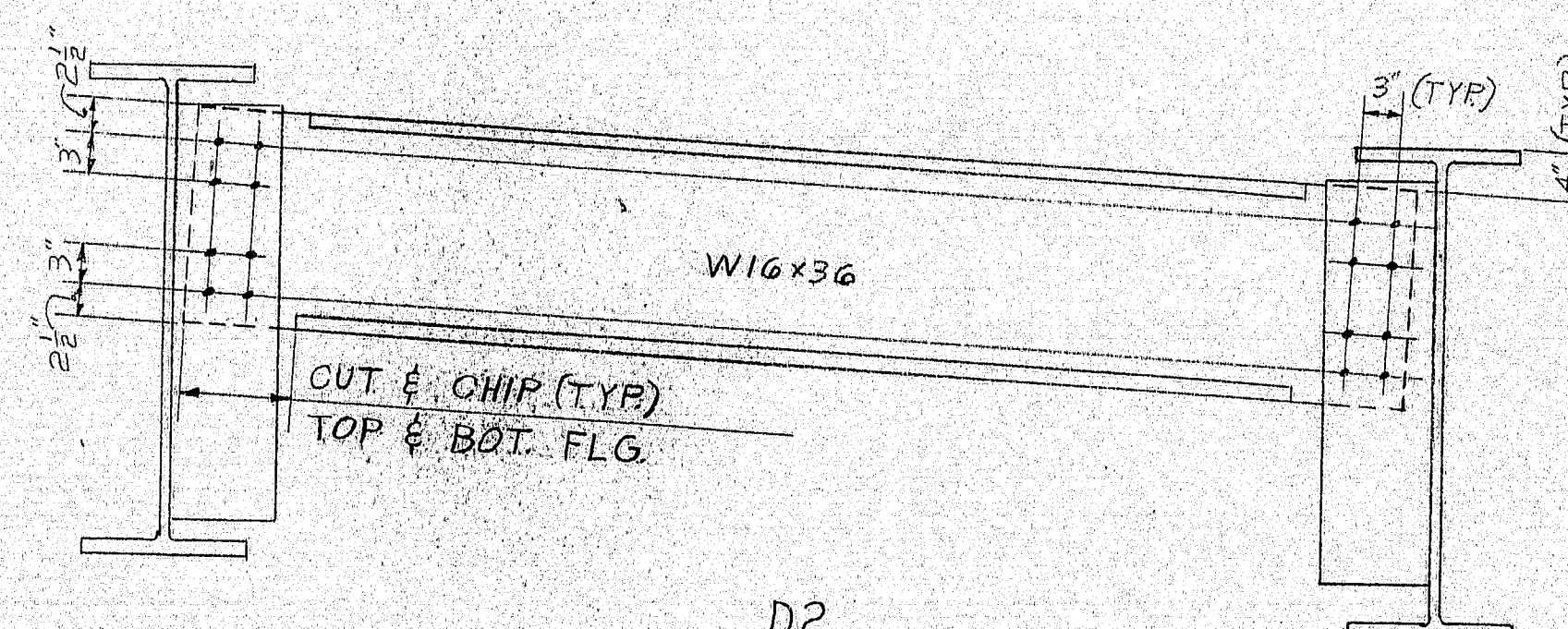


FRAMING PLAN
NORTHBOUND

FORM REACTION HOLES
Form reaction holes are to be plugged with 1/2" x 1/2" x 1/2" High Strength bolts. Holes to be plugged.



D1

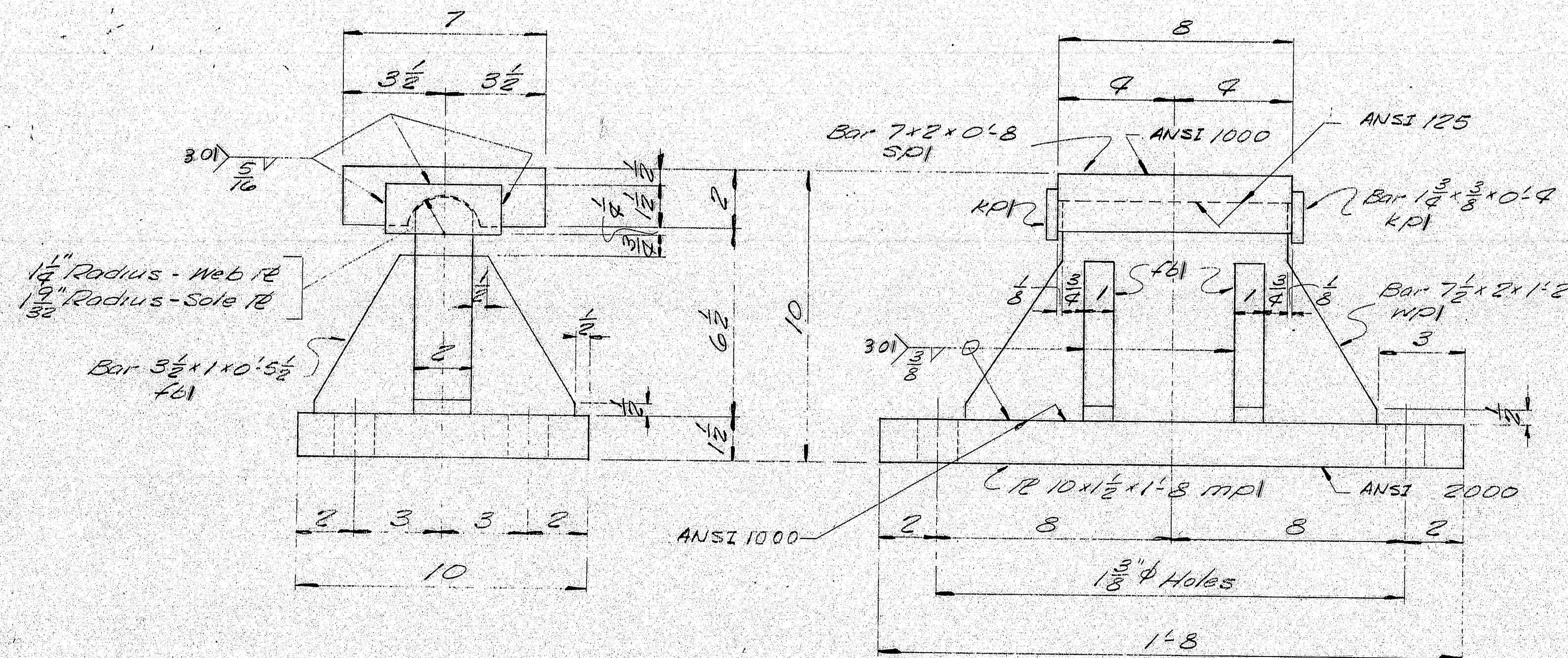


D2

ITEM NO. 504.70
PROJ. NO. 1-95-5 (42) 81

FRAMING PLAN @ NB.			
Bancroft & Martin Inc.			
South Portland, Maine 04106			
JOB: I-95 NB. OVER RT. 138			
BOWDOINHAM, MAINE			
CUSTOMER: REED & REED WOOLWICH, ME.			
DESIGNER: STATE OF MAINE D. O. T.			
REV.	PRINT DIST.	ORDER NO.	DRAWING NO.
CHECKED	7-14-75		
DRAWN	7-24-75		
	7-29-75		
	8-8-75		
		575-34	E-2

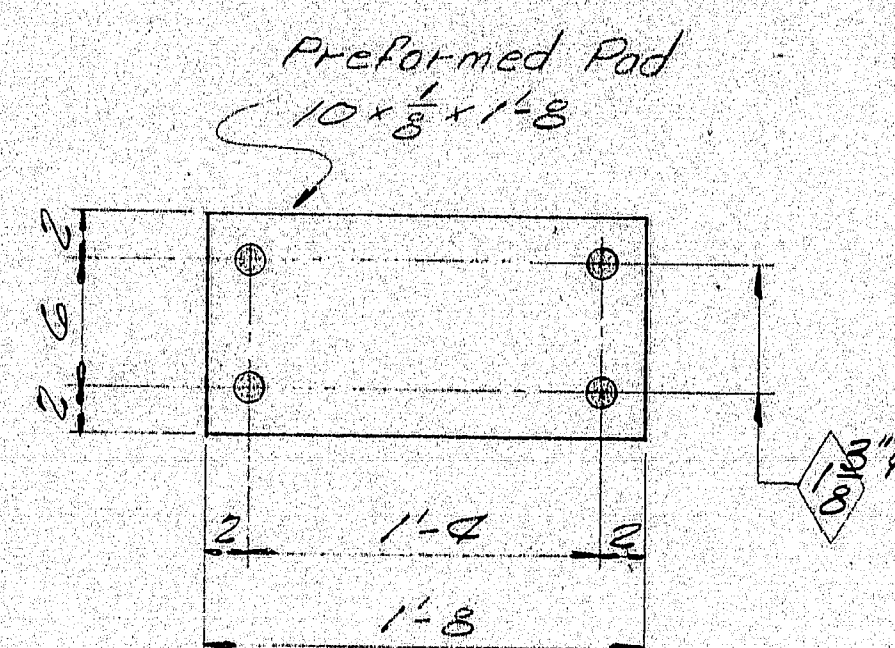
154-111



FIXED PEDESTAL FPC-2

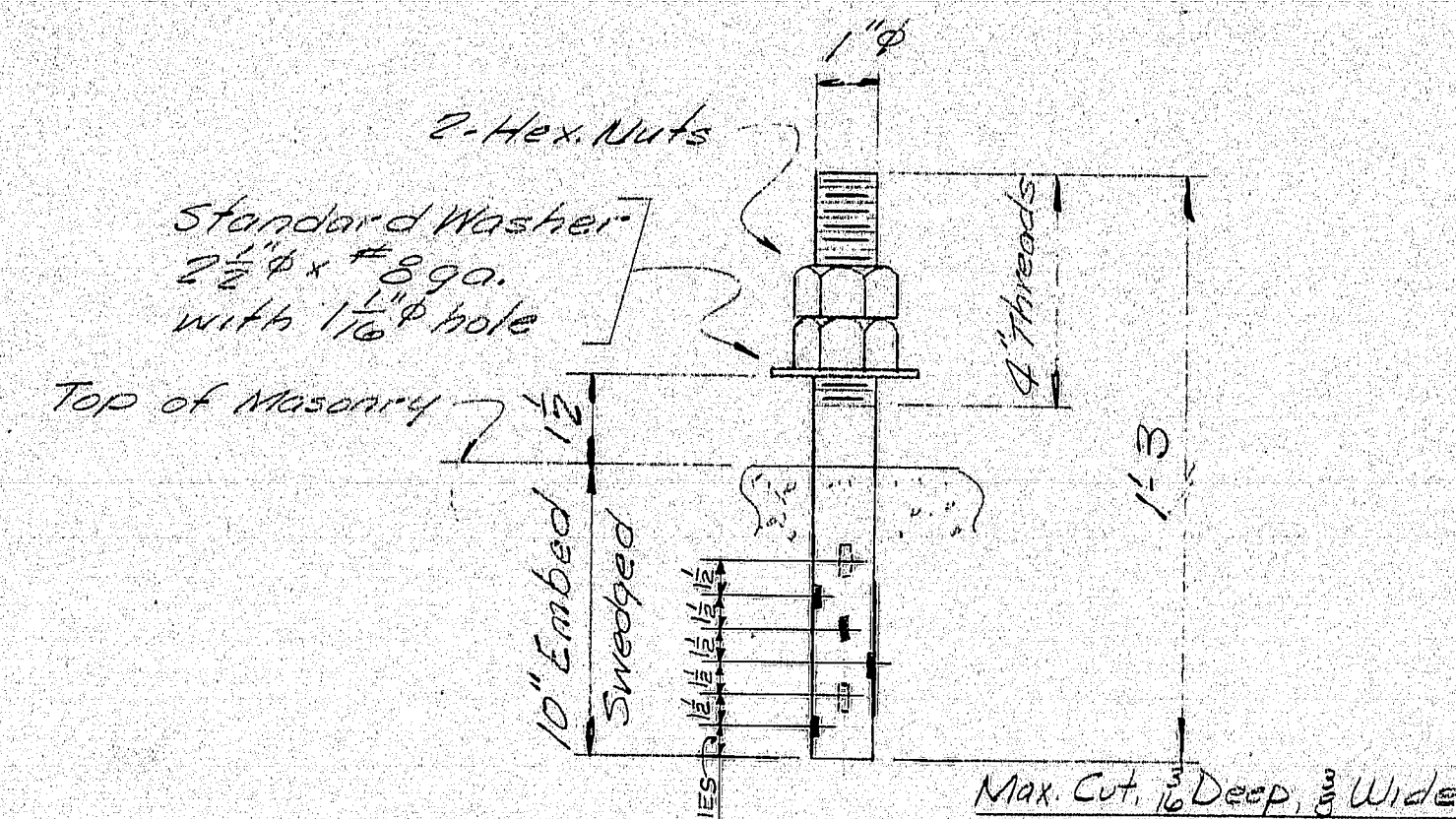
12-REQ'D.

6 @ ABUT. 1 S.B. & 6 @ ABUT. 1 N.B.



PREFORMED PAD

FPI 12-REQ'D.



ANCHOR BOLT ABI

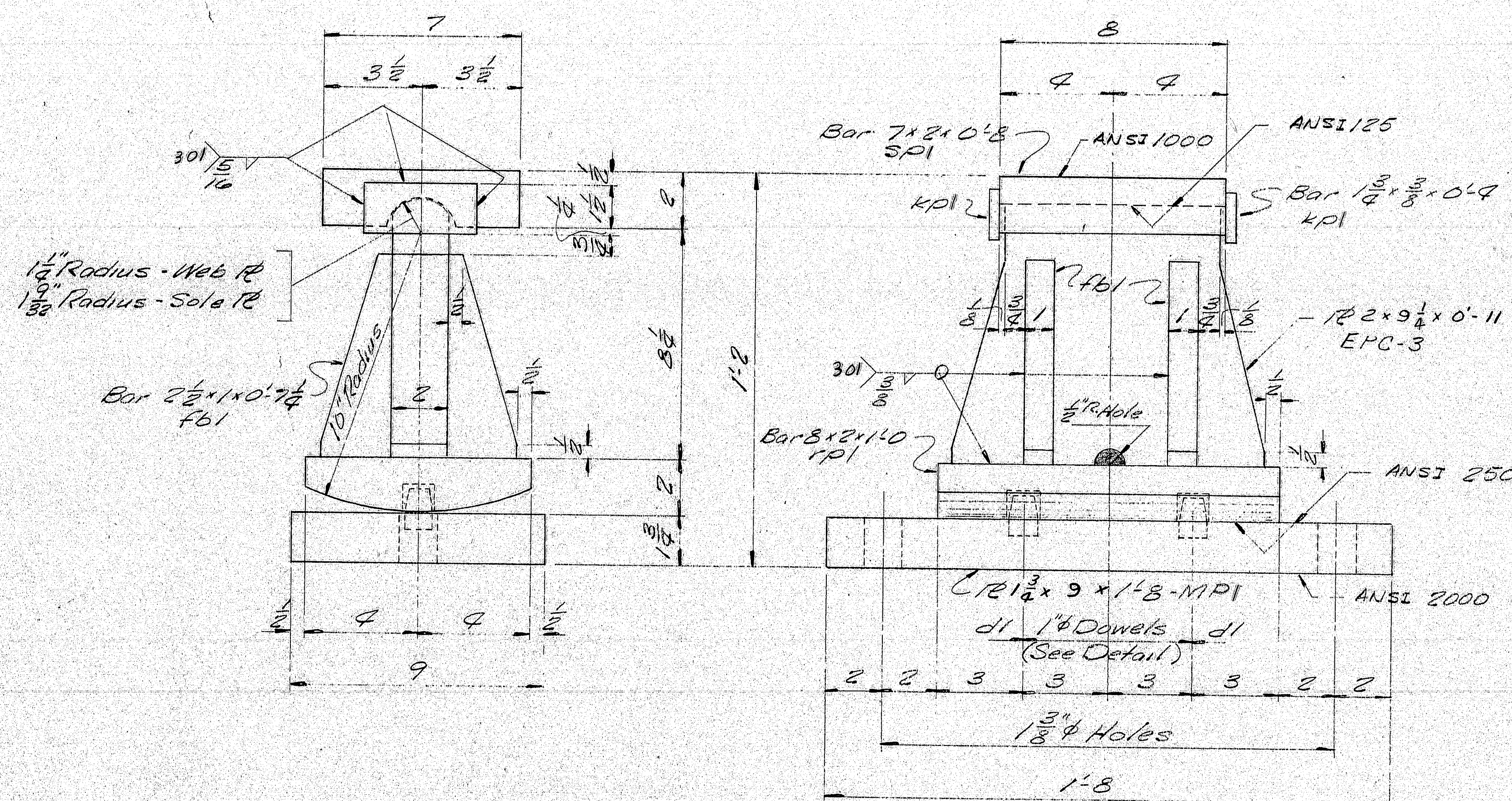
48-REQ'D.

PAINT NOTE:

No paint on surface with ANSI 125 finish, coat with mixture of white lead and tallow.

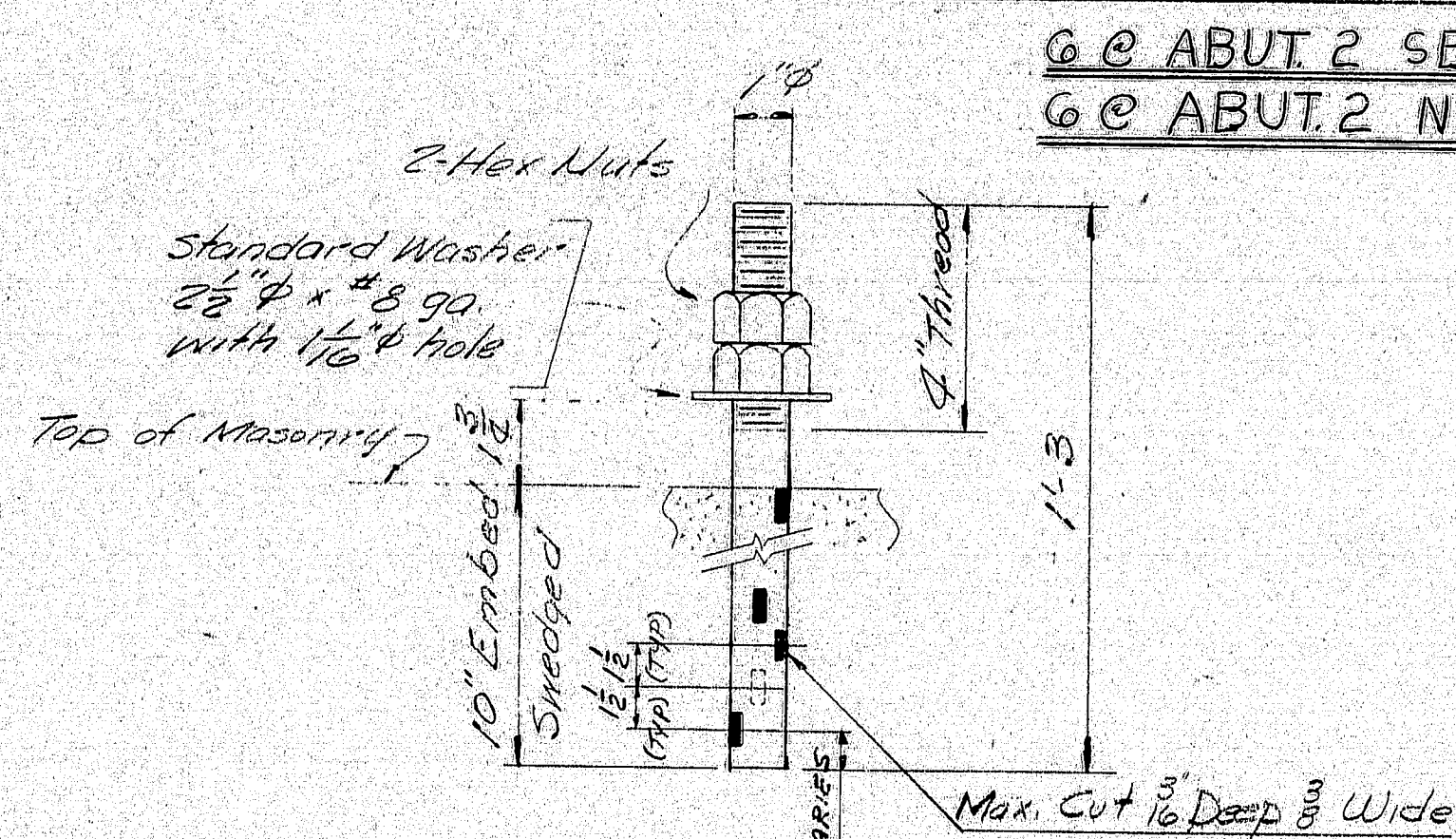
SHIP		BILL OF MATERIAL						JOB NO. 575-34	DWG. NO. 51-1
MARK	NO.	MARK	SHAPE	LENGTH	WT.	ITEM NO.	REMARKS		
FACE	12		FIXED PEDESTAL				ASSY.		
	12	MPI	12 10x1 1/2	1 8		23			
	12	MPI	Bar 7 1/2 x 2	1 2		21			
SP1	12		Bar 7 1/2 x 2	0 8		18			
	24	KPI	Bar 1 1/2 x 3/4	0 2		20			
	48	FBI	Bar 3/4 x 1	0 3 1/2		25			
ABI	48		Bar 1 1/2 x 1	1 3		28	Swaged		
	90	SHD	1" Dia			29	307 A325 TYPE 3		
Field	48		1" Washer			30	Std. Washer 2 1/2" O.D.		
						31	1" Dia. with 1/8" hole		
FPI	12		10x8	1 5		32	Pre-form Pad		
							Req. # 58-56		
ITEM 504.70									
PROJECT NO. 95-5 (42) 01									
Sole plates "SP1" to be field welded to stringers.									
Bearing material to be ASTM A588, Anchor bolts to be A588									
SHOP CONNECTIONS: see Welding Procedures									
FIELD CONNECTIONS: WELDED & BOLTED									
HOLES: As noted									
PAINT: NONE									
Spec, and as noted.									
2P	7-14-75	A	BEARING PEDESTAL DETAIL						
2S	7-27-75	TA	Baneroff & Martin Inc.						
7P	7-27-75	TA	South Portland 1, Maine						
2P	8-8-75	TA	JOB:						
			I-95 NB. & SB. OVER RT. 138						
			BOWDOINHAM, MAINE						
CHECKED	7-10-75	RFS.	CUSTOMER REED & REED						
DRAWN	6-6-75	DAB.	DESIGNER M.S.H.C. BRIDGE DIV.						
REVISION			JOB NO. 575-34						
REVISION			DWG. NO. 51-1						

154-112 #16 FPC-2



EXPANSION PEDESTAL EPC-3

12 - REQ'D.

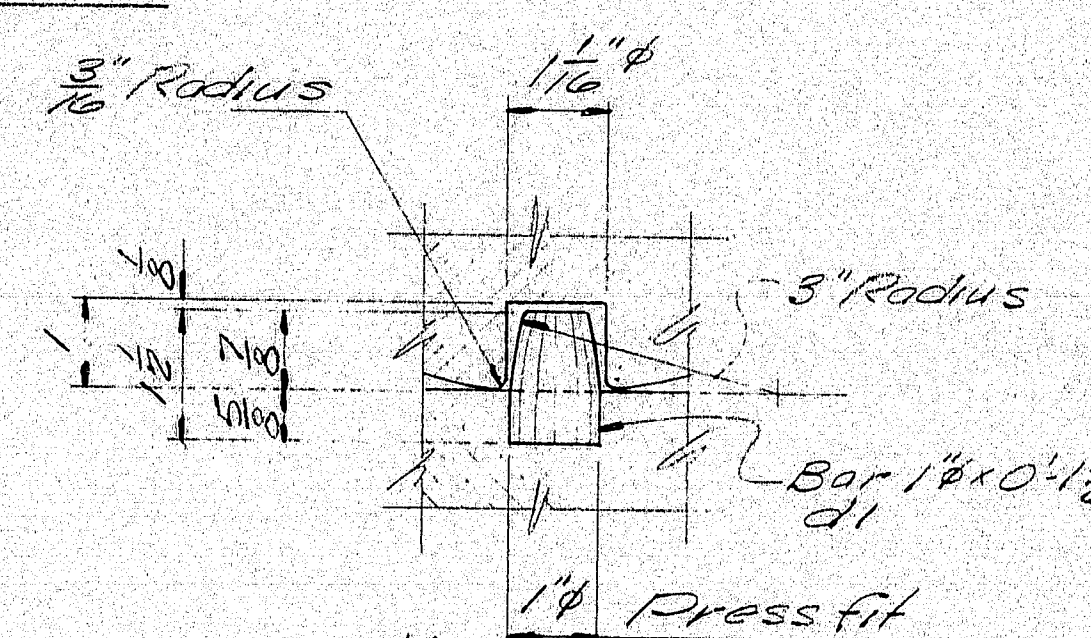


ANCHOR BOLT AB2

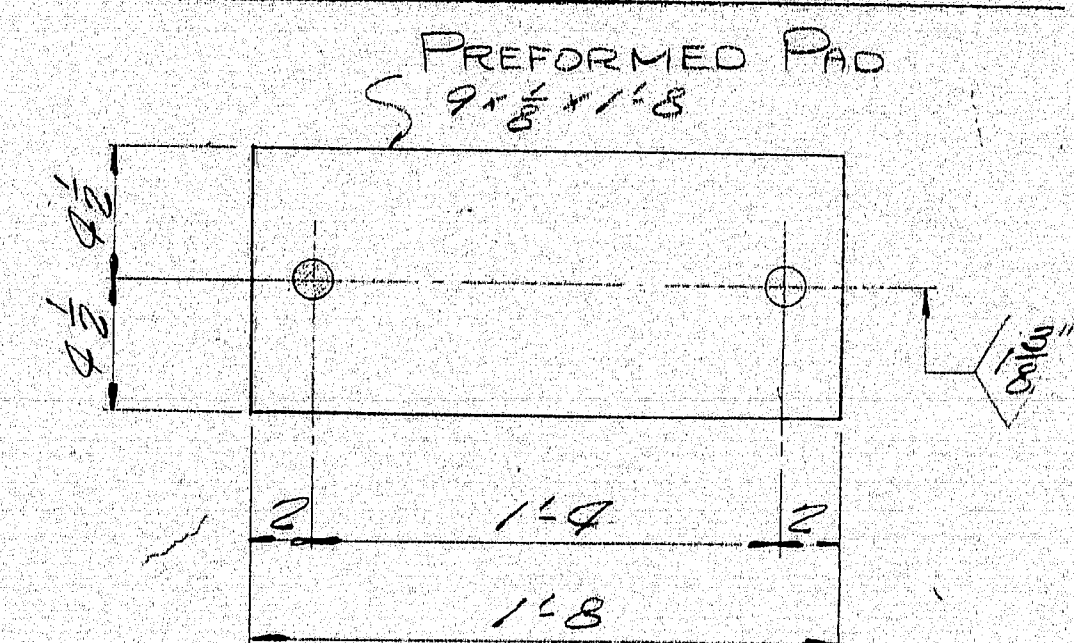
24 - REQ'D.

PAINT NOTE:

No paint on surface with ANSI 125 finish.
coat with mixture of white lead and tallow.



DOWEL DETAIL



PREFORMED PAD

FP2 12 - REQ'D.

SHIP		BILL OF MATERIAL					575-34 JOB NO. DWG. NO. 51-2	
MARK	NO.	MARK	SHAPE	LENGTH	WT.	ITEM NO.	REMARKS	
EPC-3	12		R2x9 1/2	0 11		20		
MP1	12		R1 1/2 x 9	1 8		22		
	12	101	Bar 8x8	1 0		19		
SP1	12		Bar 7x8	0 8		18		
	48	161	Bar 2 1/2 x 1	0 7 1/2		24		
	24	d1	Bar 1 1/4	0 1 1/2		27		
	24	401	Bar 1 1/2 x 3/8	0 4		26		
AB2	24		Bar 1 1/4	1 3		28	SWEDGE	
	48	shop	1 1/4 Hex Nut			29	A325 TYPE 3	
Field	24		1 1/4 Washer			30	STD. WASH. 2 1/2" O.D. x 1" Bga, 1 1/2" hole.	
FP2	12		Pad 9x8	1 8		31	Preformed Pad REQ#58-56	

BARE STEEL

ITEM 504.70
PROJECT NO. 95-5(42) 81
Sole plates "SP1" to be field welded
to stringers

Bearing material to be ASTM-A588, Anchor
bolts to be A588

SHOP CONNECTIONS: WELDED SEE WELDING PROCEDURES
FIELD CONNECTIONS: WELDED & BOLTED
HOLES: As noted
PAINT: NONE

APPROVED:

2P 7-14-75
2S 7-27-75
4P 7-27-75
2P 8-8-75

BEARING PEDESTAL DETAIL

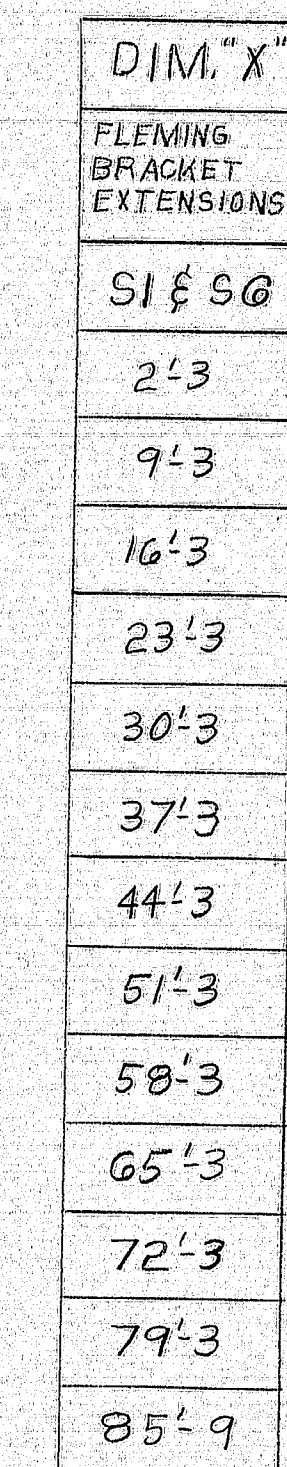
Bancroft & Martin Inc.
South Portland 1, Maine

JOB:
I-95 NB. ESB. OVER RT. 138
BOWDOINHAM, MAINE

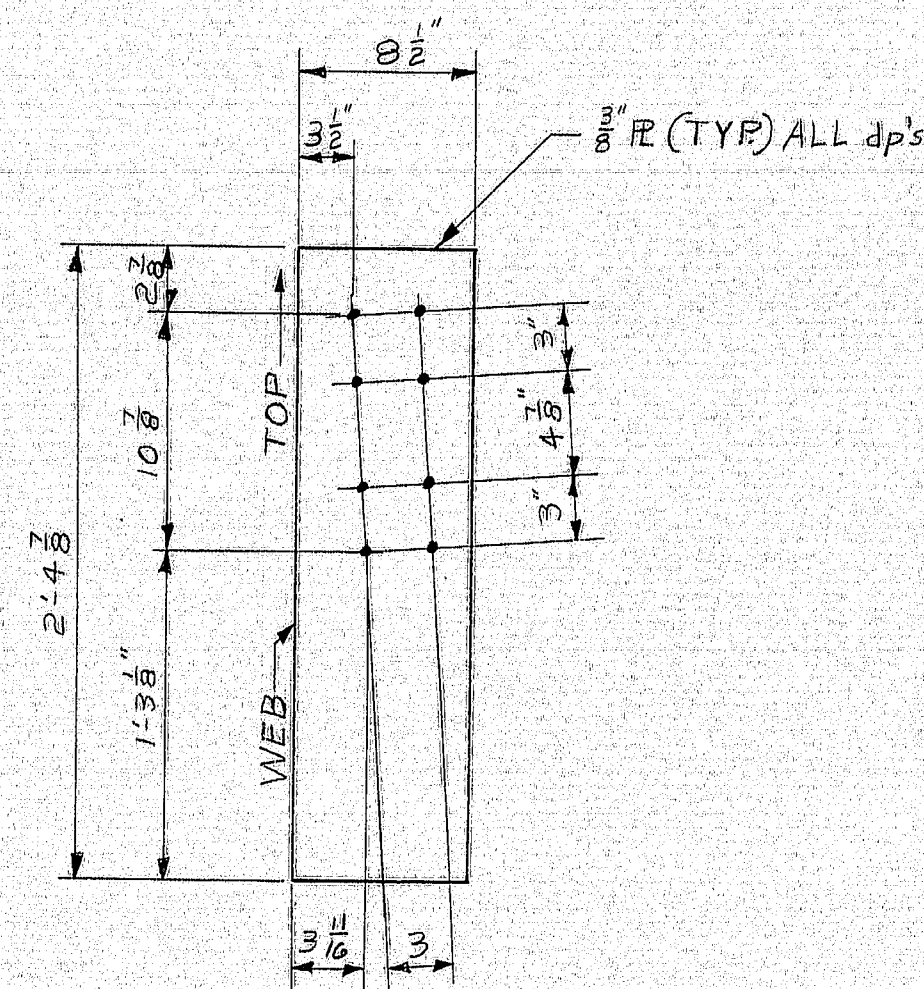
CUSTOMER REED & REED
DESIGNER MAINE DEPT. OF TRANS.

JOB NO. 575-34 DWG. NO. 51-2

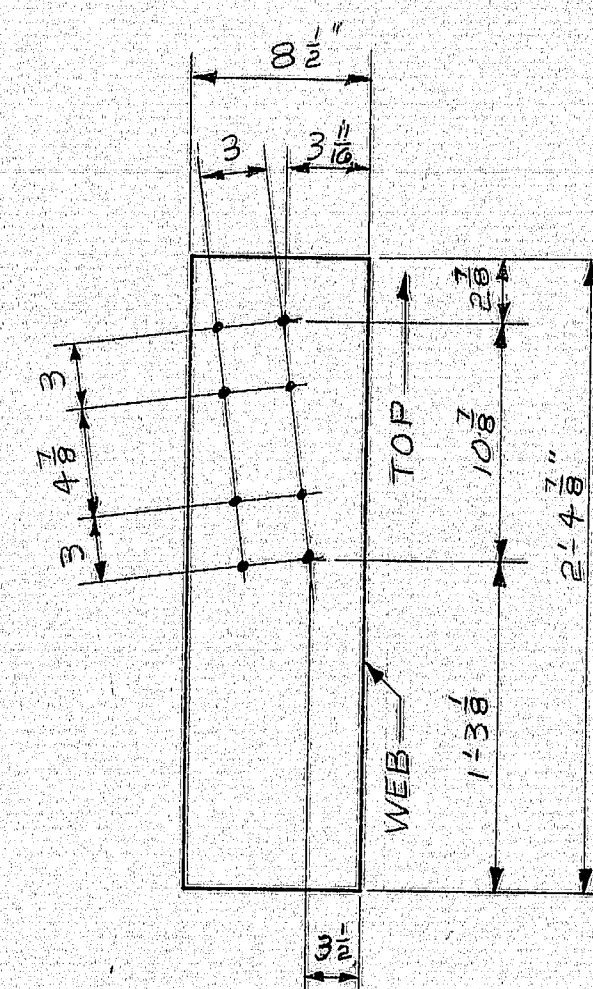
154-113 #10 EPC-3

[illegible]

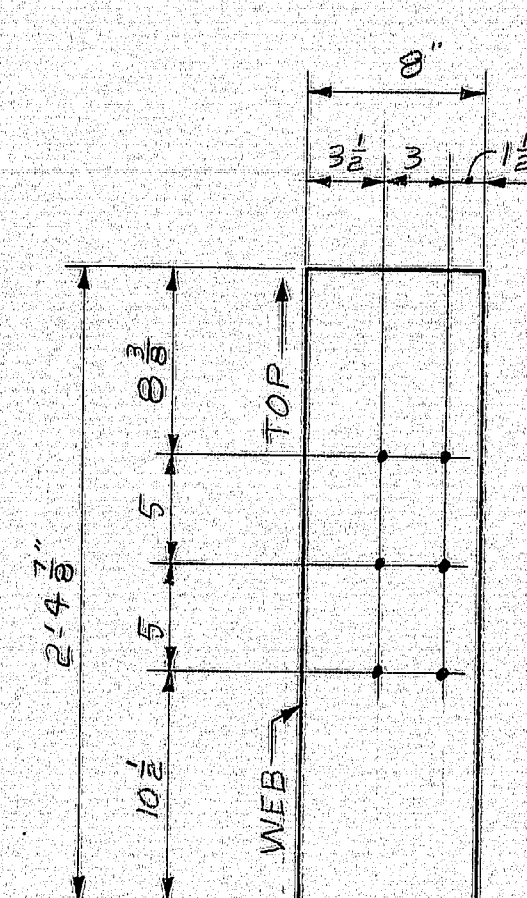
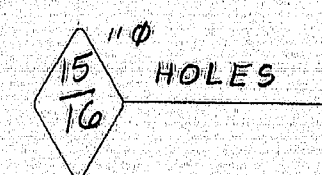
154-114



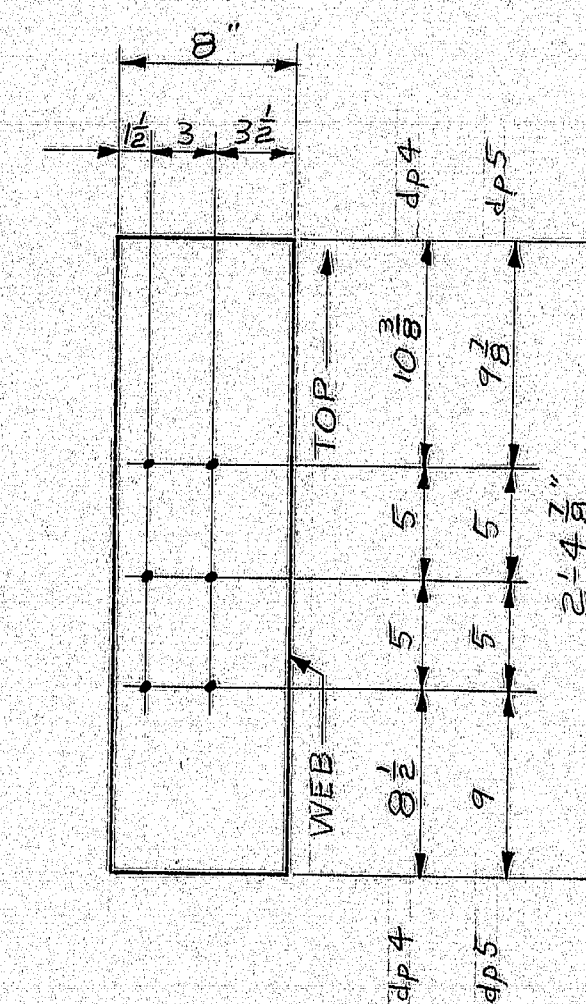
20-dp1



20-dp2



30-dp3

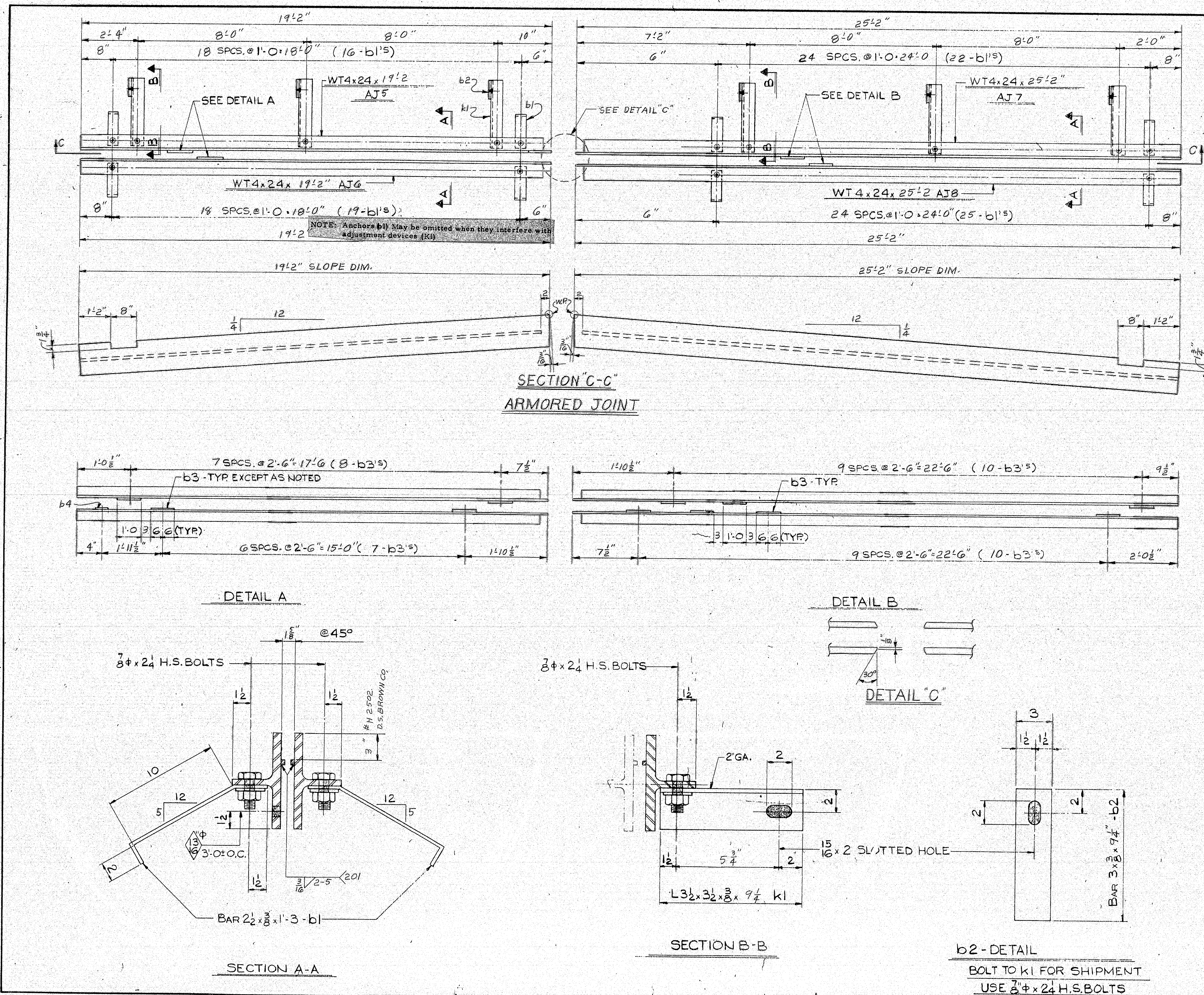


24-dp4
6-dp5

ITEM NO. 504.70
PROJ. NO. 95-5(42) 81

DIAPHRAGM PLATES			
PRINT DIST.		<i>Bancroft & Martin Inc.</i> <i>South Portland, Maine 04106</i>	
2P	7-14-75		
2S	7-29-75		
4P	7-29-75		
2P	8-8-75		
JOB:		I 95 NB & SB. OVER RT. 138	
		BOWDOINHAM, MAINE	
		CUSTOMER: REED & REED WOOLWICH, ME.	
		DESIGNER: STATE OF MAINE D.O.T.	
REV.		ORDER NO.	DRAWING NO.
CHECKED	7-10-75		
DRAWN	6-17-75		
		575-34	55-2

154-115



SHIP		BILL OF MATERIAL		JOB NO. 575-34		DWG. NO. 58-2	
MARK	NO.	MARK	SHAPE	LENGTH	WT.	ITEM NO.	REMARKS
AJ5	1		WT 4 x 24	19	2	6	
AJ6	1		DO	19	2	6	
AJ7	1		DO	25	2	6	
AJ8	1		WT 4 x 24	25	2	6	
B2	b1		BAR 2 1/2 x 3/8	1	3	9	BEND
G	b2		BAR 3 x 3/8	0	9 1/2	8	
35	b3		BAR 3/4 x 3/8	1	0	11	
1	b4		BAR 3/4 x 3/8	0	3	11	
G	k1		L 3 1/2 x 3 1/2 x 3/8	0	9 1/2	7	
90	SHOP		1/2" H.S. BOLTS	0	2 1/2	33	A325 TYPE 3
90	SHOP		1/2" WASHERS	-	-	34	

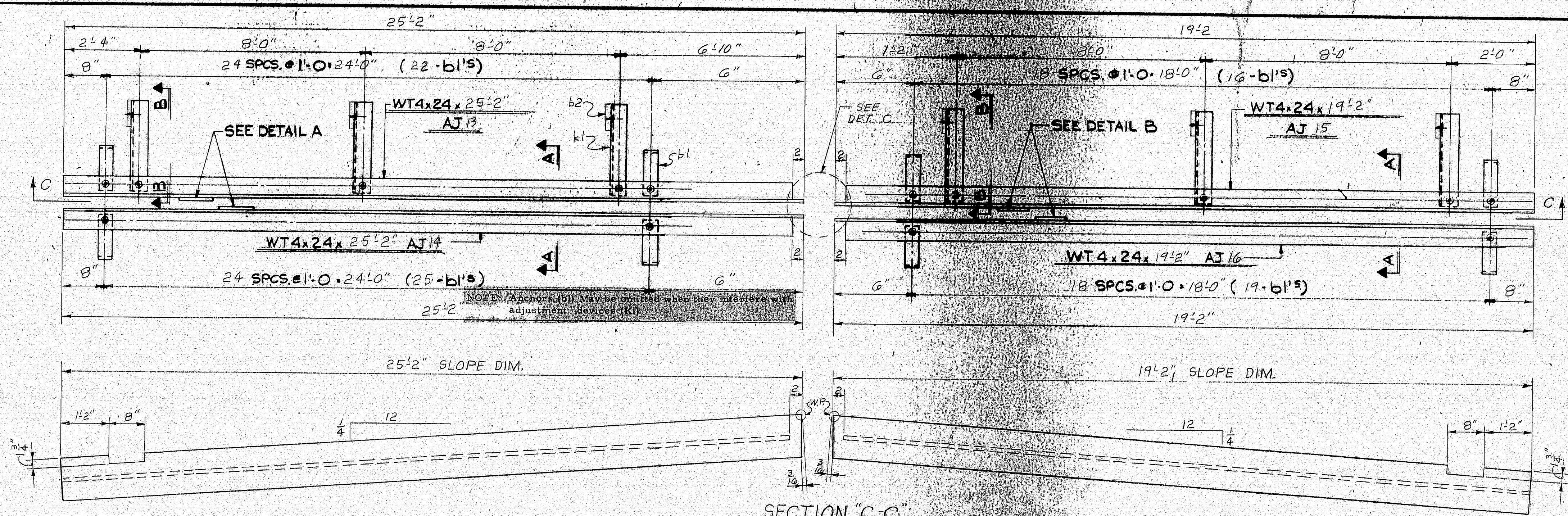
ITEM NO.	504.70
PROJ. NO.	95-5 (42) 81

STEEL ASTM. A 508	
WELDING ELECTRODE SEE WELDING PROCEDURES	
SHOP CONN. BOLTED & WELDED	
FIELD CONN. WELDED	
HOLES: 1/8" EXCEPT AS NOTED	
PAINT: NONE	
SPECIAL CLEANING: BLAST CLEAN	
APPROVED:	

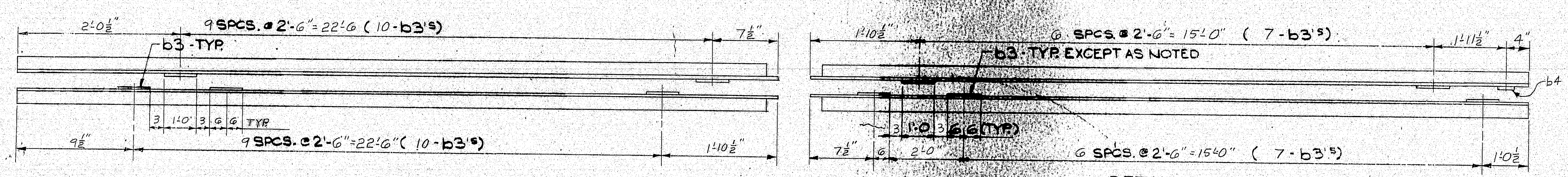
ARMORED JOINTS - ABUT. #2 @ 5B	
PRINT DIST.	Bancroft & Martin Inc.
2P 7-14-75	South Portland, Maine 04106
23 7-29-75	
4P 7-29-75	
2P 8-8-75	
JOB:	I-95 NB. & SB. OVER RT. 138
	BOWDOINHAM, MAINE
CUSTOMER:	REED & REED, WOLWICH, ME.
DESIGNER:	ME. DEPT. OF TRANS., BUREAU HWYS.
ORDER NO.	JOB NO.
575-34	58-2

154-11B

154-119

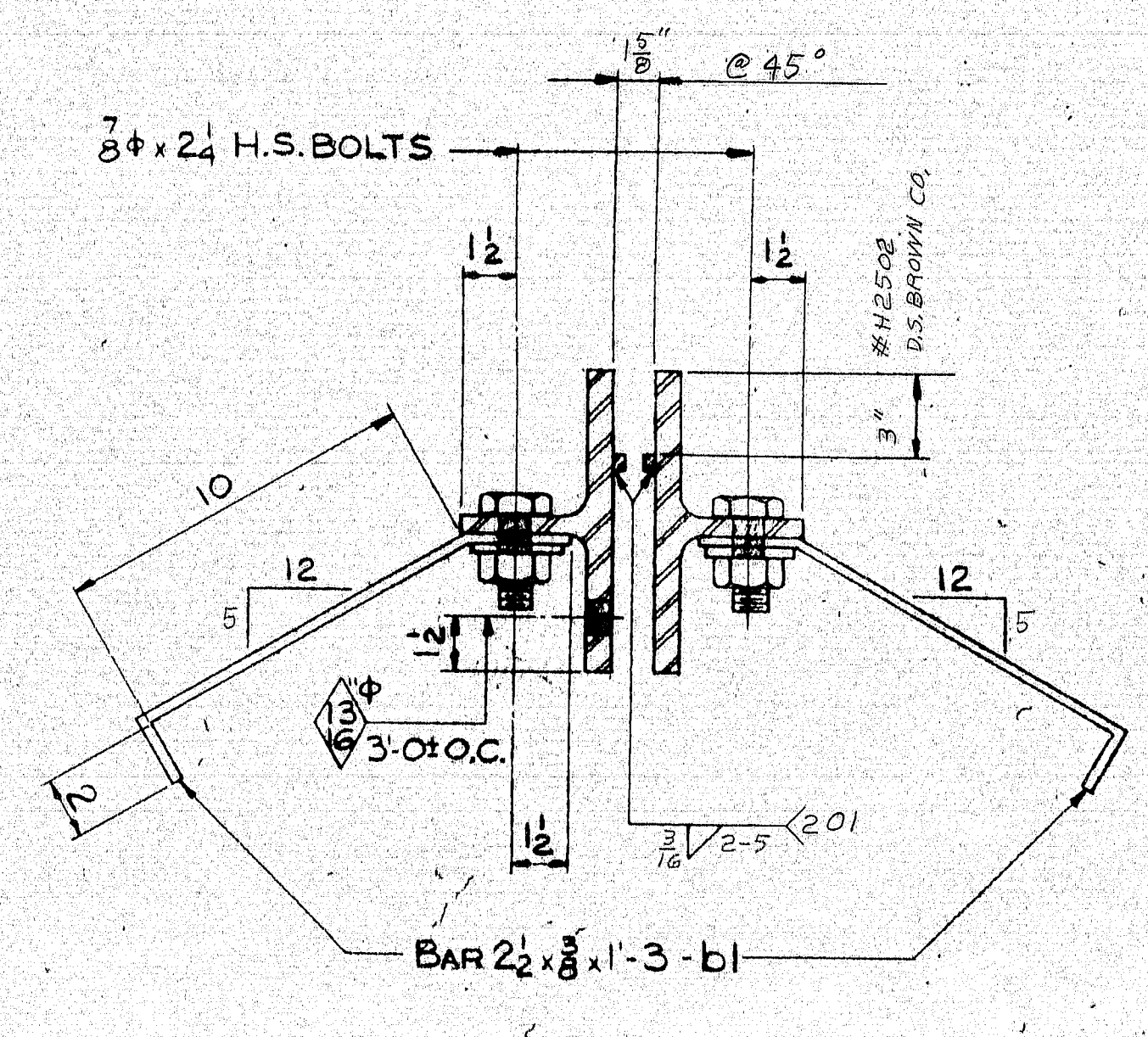


SECTION "C-C"
ARMORED JOINT

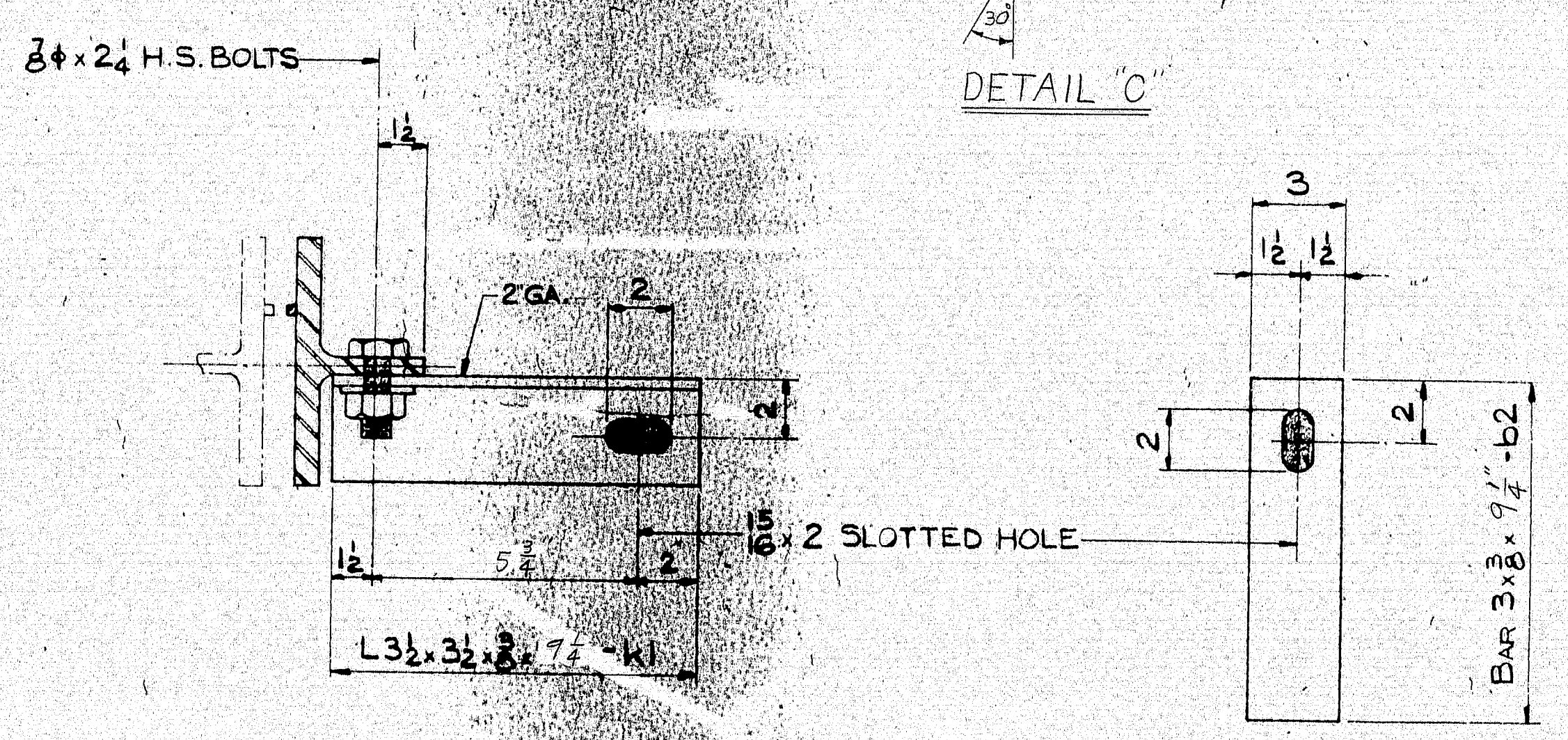


DETAIL A

DETAIL B



SECTION A-A



SECTION B-B

b2-DETAIL
BOLT TO K1 FOR SHIPMENT
USE 3/4 x 24 H.S. BOLTS

SHIP		BILL OF MATERIAL		JOB NO. 575-34		DWG. NO. 58-4	
MARK	NO.	MARK	SHAPE	LENGTH	WT.	ITEM NO.	REMARKS
AJ13	1		WT4x24	25	2	6	
AJ14	1		DO	25	2	6	
AJ15	1		DO	19	2	6	
AJ16	1		WT4x24	19	2	6	
B2	b1		BAR 2 1/2 x 3/8	1	3	9	BEND
	G	b2	BAR 3 x 3/8	0	7 1/2	8	
	35	b3	BAR 3 x 3/8	1	0	11	
	1	b4	BAR 3 x 3/8	0	3	11	
	G	K1	L 3 1/2 x 3 1/2 x 3/8	0	7 1/2	7	
	96	SHOP	3/8" H.S. BOLTS	0	2 1/2	33	TYPE 3
	96	SHOP	3/8" HARD WASHERS	-	-	34	

BARE STEEL

ITEM NO. 50470
PROJ. NO. 75-5 (42) 21
STEEL ASTM. A588.
WELDING ELECTRODE SEE WELDING PROCEDURES
SHOP CONN. BOLTED & WELDED
FIELD CONN. WELDED
HOLES 5/8" EXCEPT AS NOTED
PAINT: NONE
SPECIAL CLEANING: BLAST CLEAN
APPROVED:

ARMORED JOINTS - ABUT. #2 @ NB.	
PRINT DIST.	
2P 7-14-75	
2P 7-27-75	
4P 7-27-75	
2P 8-8-75	
Bancroft & Martin Inc. South Portland, Maine 04106	
JOB: I-95 N.B. & SB. OVER RT. 138 BOWDOINHAM, MAINE	
CUSTOMER: REED & REED WOODWICH, ME.	
DESIGNER: ME. DEPT. OF TRANS., BUREAU HWYS.	
ORDER NO.	JOB NO.
575-34	58-4

154-170

